

## INSTALLATION METHOD 2G/5G-i system

### LVT/WPC/SPC panels

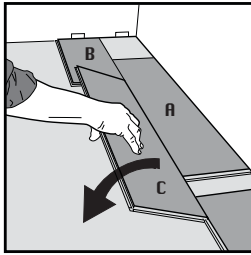


Fig 1.

First row.

Place a panel (A) as support for long side alignment of panel (B) and (C) while you install panel (B) and panel (C). After that the complete first row is installed, remove panel (A).

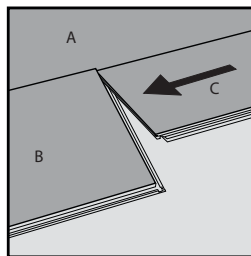


Fig 2.

Second plank, first row.

Place this plank (C) gently close to the short end of the first one (B).

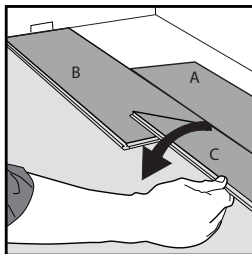


Fig 3.

Fold it down with a single action movement.

During the fold down, make sure the panels are close to each other.

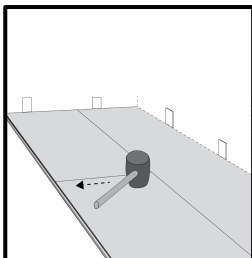


Fig 4.

Afterwards press slightly or use a rubber hammer along the short end just installed.

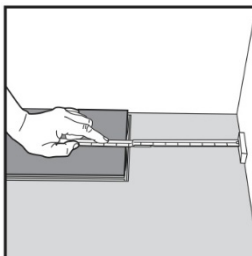


Fig 5.

At the end of the first row, put a spacer to the wall and measure the length of the last plank to fit.

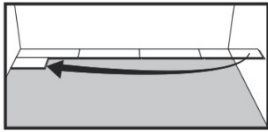


Fig 6.  
Second row  
First plank min length 500 mm. Put a spacer against the left wall.



Fig 7.  
Staggered joint distance i.e. minimum distance between short ends of planks in parallel rows shall not be less than the given length.

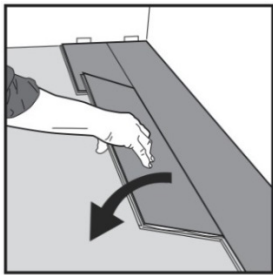


Fig 8.  
Second plank second row.  
Place the panel **gently and close** to the short end of the previous panel and fold it down in a single action movement.

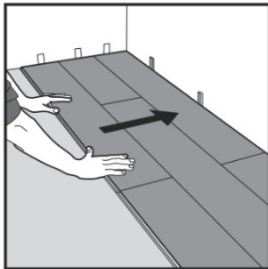


Fig 9.  
After 2-3 rows.  
Adjust the distance to the front wall by placing spacers.

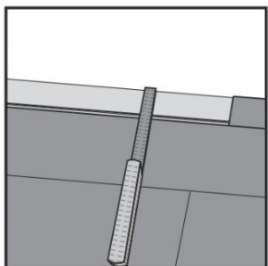


Fig 10.  
Last row (and perhaps also first row).  
Minimum width 50 mm.  
Place a spacer to the wall before measuring.  
Cut the panels lengthwise.

## Disassembling panels



Fig 11.

Separate the whole row by carefully lifting up and release the whole row.  
Fold up the row and release the whole long side.

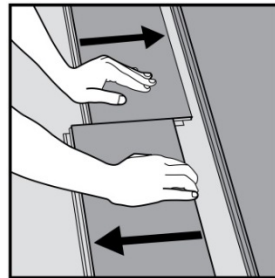
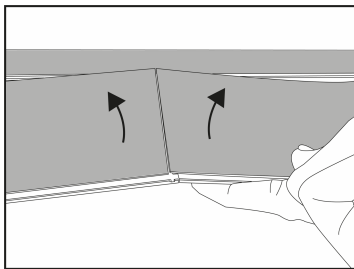


Fig 12 and fig 13

Disassemble the panels by lifting up under the short end.

Or disassemble the panels by **sliding the short ends horizontally.**

**Do never fold up a panel, as this damage the profile.**

## Horizontal installation

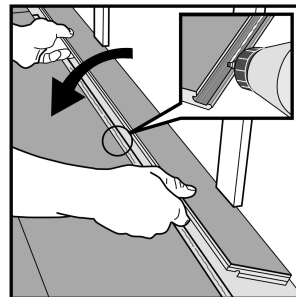
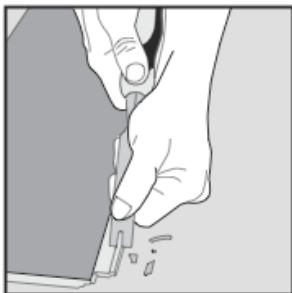


Fig 14 and fig 15.

Cut off the vertical locking part of the strip with a chisel, put applicable glue on the strip and push the planks horizontally together. If necessary place some spacers between last board and the wall during the hardening.

## Radiator pipes

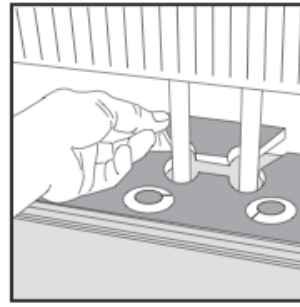
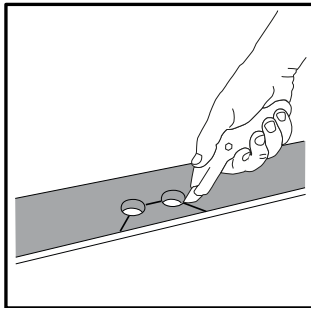


Fig 16 and 17.  
Installation at radiators. Drill the holes 2 x spacer thickness larger, than the diameter of the pipes.

2018-Feb-01 /MN&JZ