

First issue

SPC - Standard installation 2G+2G - Angle-Angle

E. Installation method of floor panels

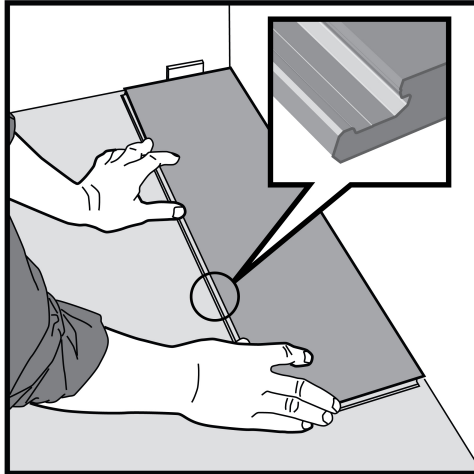


Fig 1.

First plank, first row.

Place a distance 8 mm thickness to the left and position the plank against the wall.

Later, after 3 rows, you can easily position the flooring against the front wall with distances 8 mm.

Prior to installation, measure the width of the room to check if the first row should preferably be cut length wise to get more equal width of the first and last rows planks. See also fig 12.

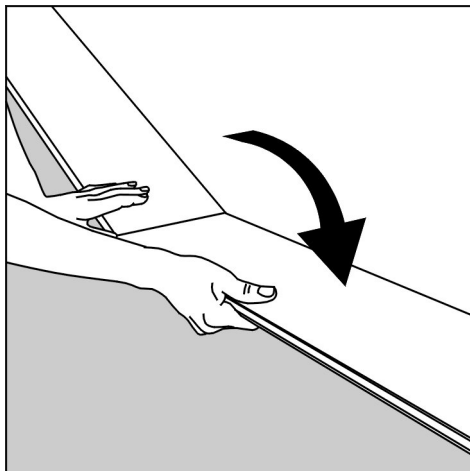


Fig 2.

Second plank, first row

Press the short end of the next floorboard at an angle to the first one, and then lay down.

Complete the first row in the same way.

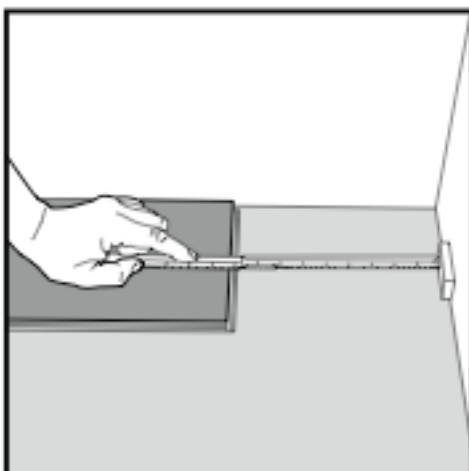


Fig 3.

At the end of the first row, put a distance 8 mm, to the wall and measure the length of the last plank to fit.

Cut the last panel to correct length, recommended min length is two times the width of the plank

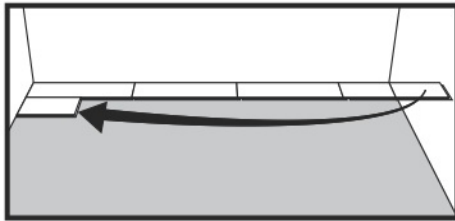


Fig 4.
Second row. Position the remaining part of the first row's last plank as first plank of second row. Keep again two times the width as min length. Put a distance against the wall.

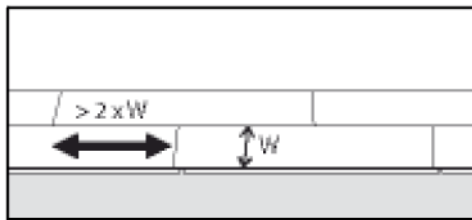


Fig 5.
General. Distances between short ends. Minimum distance between short ends of planks in parallel rows shall not be less than about two times the width of the plank.

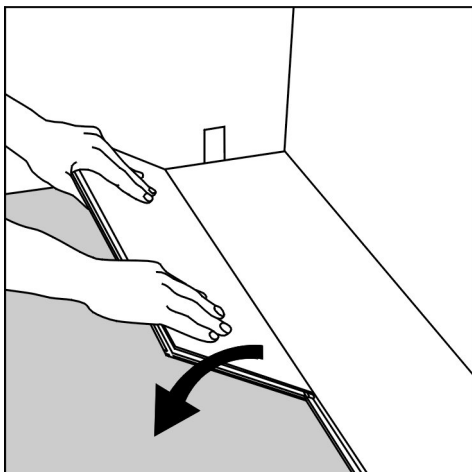


Fig 6.
Place the floorboard an angle against the floorboard in the previous row, press forward and fold down at the same time. Leave the panel in a somewhat up angled position where the panels start to loc. To make this further easier, a wedge with the suitable angle can be placed under the plank near the short side joint as support.

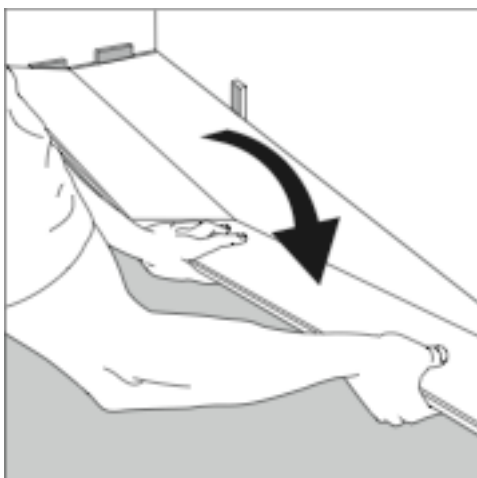


Fig 7.
Second plank second row. Place the short end of the floorboard at an angle against the previous installed floorboard and fold down all the way.

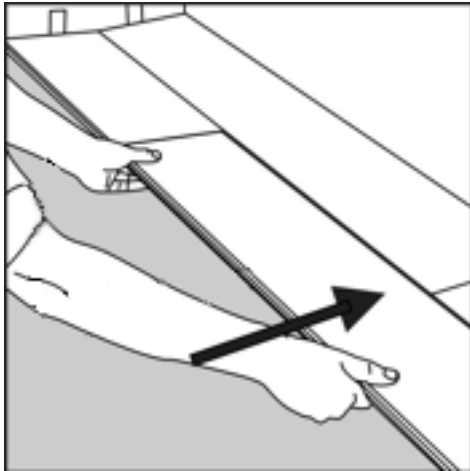


Fig 8.

Push to slide the plank against the row in front so it aligns with the first plank. Put it down like with the first plank when the floorboards are positioned tightly together. The first/previous plank can now be folded completely down to horizontal position and if a wedge is used it can be moved to the next short end joint.

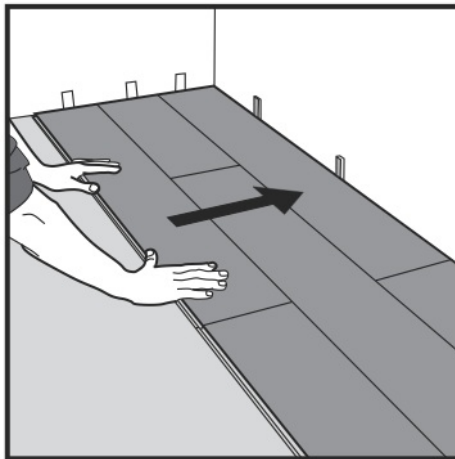


Fig 11.

After 2-3 rows.

Adjust the distance to the front wall by placing distances 8 mm. Keep the distances in position during the entire time of installation and remove once the installation is completed.

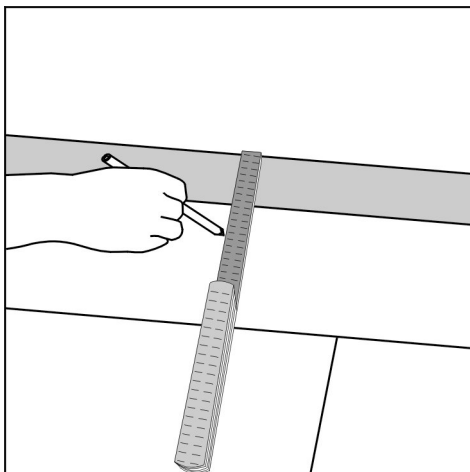


Fig 12.

If the wall is uneven, the floorboards must be adapted to its contours. Mark the floorboards with the contour of the wall. Do not forget to leave ca 8 mm space to the wall.

This procedure shall be used also for the first row if necessary.

Horizontal installation

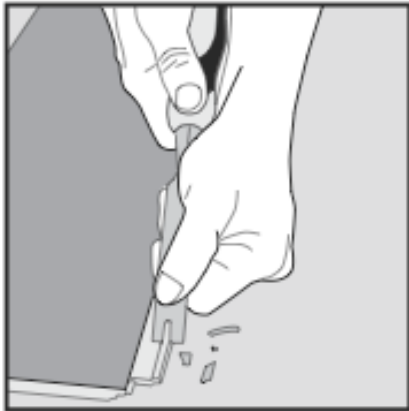


Fig 13.

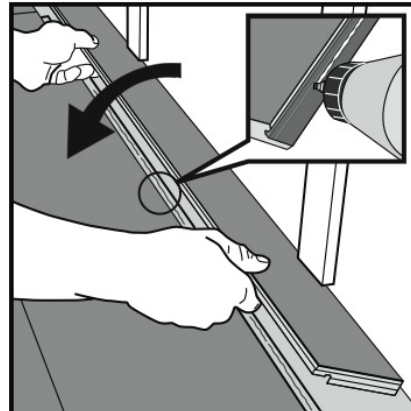


Fig 14.

Cut off the locking element with a chisel, apply applicable glue on the adjusted strip and push the planks horizontally together. If necessary place some spacers between last board and the wall during the hardening time of the glue. The method can also be applied to the short ends.

Radiator pipes – Principle cut out

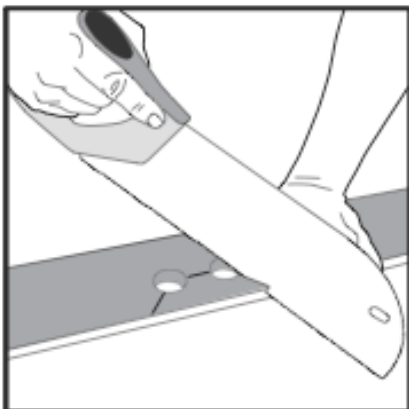


Fig 15.

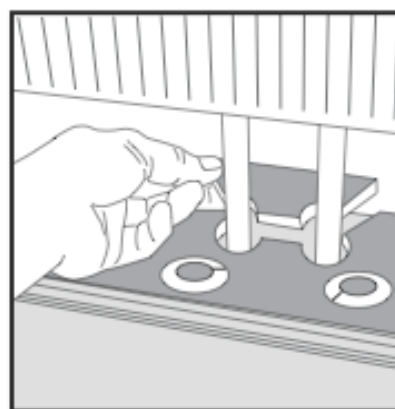


Fig 16.

Installation at for example radiator pipes.

Mark the centre of the holes and drill the hole with a diameter about 16 mm bigger than the pipe diameter (= 8 mm gap around), cut as shown with a saw or with a sharp utility knife. Install the floor plank. If necessary, put glue on the cut piece and replace.